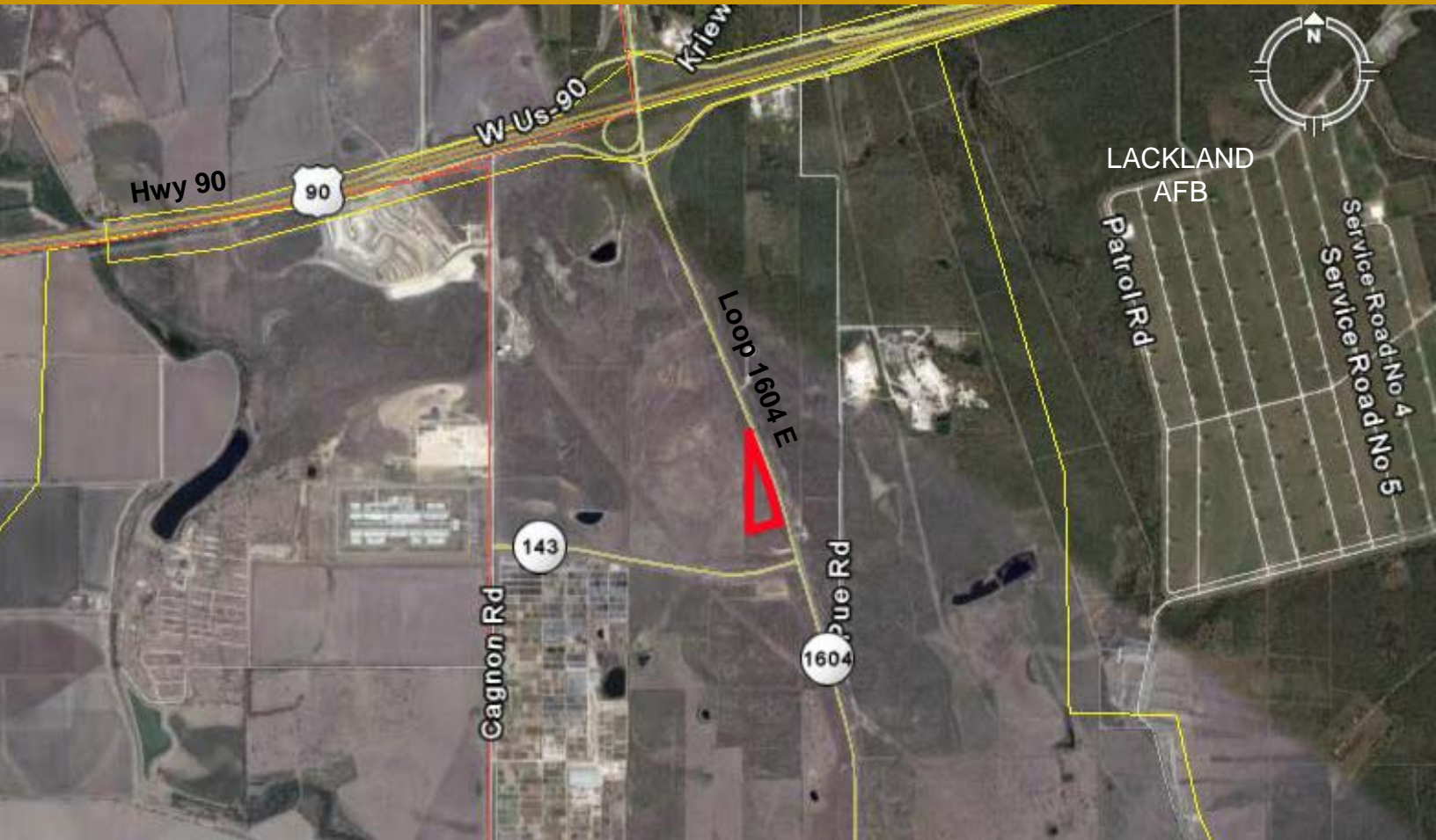


+/- 4.41 ACRES

Loop 1604 E, San Antonio, TX

FOR SALE



- **Loop 1604 frontage**
- **Prime location**
- **\$229,500.00**

LOCATION

Fronting Loop 1604 E just south of Hwy 90 W. Close proximity to many new residential subdivisions, Toyota, Kelly USA and Lackland Air Force Base.

FRONTAGE

Approximately 1,000 ft along west side of Loop 1604.

UTILITIES

Prospective buyers should retain an independent engineer to verify the location accessibility, and capacity of all utilities for buyer's intended use.

LEGAL DESCRIPTION

CB 5197 P-9B ABS 544

ZONING

Unzoned, Bexar County

MAPSCO

646 C5



Pete Tassos

ptassos@sullivan-commercial.com

(210) 341-9292

www.sullivan-commercial.com

+/- 4.41 ACRES

Loop 1604 E, San Antonio, TX

FOR SALE

